

NAME: P:\09\0103\2009 Task Orders\SEMS\Task 4 EDB Detail\BMP DETAILS\_1241108\0134EDB2\_Example 2.dwg DATE: JAN 08 2012 TIME: 10:58:44

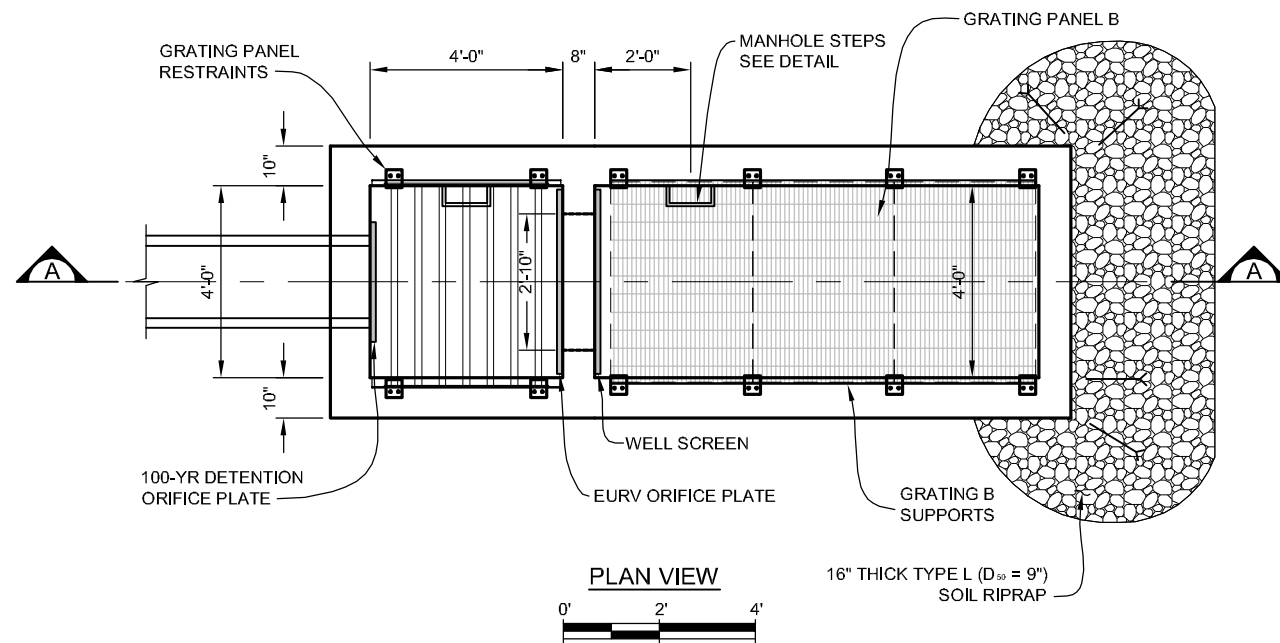
REFERENCE:	SCALE:	Standard Plan Revision	
		No.	Date
		Description	



76 INVERNESS DRIVE EAST, SUITE A  
 ENGLEWOOD CO, 80112  
 PHONE (303) 858-8844  
 FAX (303) 267-9565

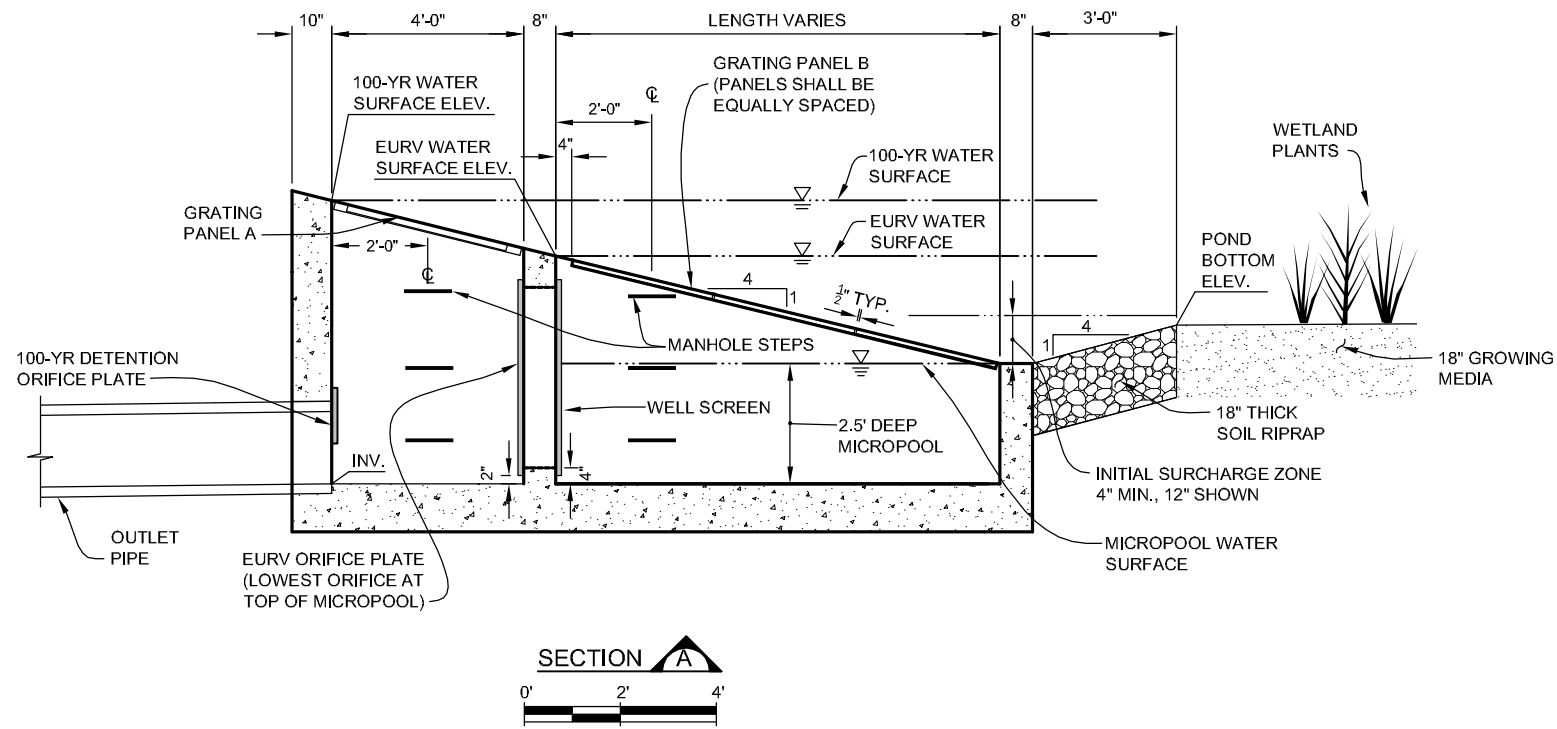
EXAMPLE PLAN 2  
**MODIFIED EXTENDED  
 DETENTION BASIN**

SHEET  
 1 OF 3



**NOTES TO DESIGNERS:**

1. EXTENDED DETENTION BASIN MAY PROVIDE WQCV AND FULL-SPECTRUM DETENTION (EURV AND 100-YEAR) IN A SINGLE FACILITY, OR THESE MAY BE SPLIT BETWEEN SEPARATE FACILITIES AS SHOWN IN FIGURE 13-5 OF THE STORMWATER MANAGEMENT MANUAL.
2. SIZING OF FOREBAY, INITIAL SURCHARGE ZONE, MICROPOOL, OUTLET, AND SPILLWAY SHALL BE IN ACCORDANCE WITH STORMWATER MANAGEMENT MANUAL.
3. HANDRAIL IS RECOMMENDED FOR USE ADJACENT TO COARSE GRATING AND/OR WHERE PEDESTRIAN TRAFFIC IS IN CLOSE PROXIMITY TO THE OUTLET STRUCTURE. IT IS THE RESPONSIBILITY OF THE DESIGN ENGINEER TO DETERMINE WHETHER HANDRAIL IS TO BE USED.
4. WELL SCREEN MAY BE OMITTED IF CONTROL ORIFICES ARE 2.5 INCHES IN DIAMETER OR 2 INCHES SQUARE OR GREATER (IN THIS CASE, FABRICATED BAR GRATING PROVIDES DEBRIS PROTECTION).
5. IT IS THE RESPONSIBILITY OF THE DESIGN ENGINEER TO SIZE, DESIGN, AND DETAIL ALL EDB STRUCTURES, INCLUDING REINFORCING STEEL GRATING, ORIFICE PLATE, WELLSCREEN, AND ALL METAL WORK CONNECTIONS.
6. EXITING PIPE MAY BE RAISED IF NEEDED TO ACCOMODATE EXISTING TIE IN ELEVATION. MAXIMUM ELEVATION OF PIPE INVERT SHALL NOT EXCEED MICROPOOL WATER SURFACE ELEVATION.
7. SEE BMP SPECIFICATIONS SHEET FOR GROWING MEDIA SELECTIONS AND SPECIFICATIONS.



NAME: P:\09\01\03\2009 Task Orders\_SEWSWATask 3 BMP Training\BMP DETAIL\CAD\0901\SEDB-2\_Example2.dwg DATE: DEC 27, 2011 TIME: 4:14 PM

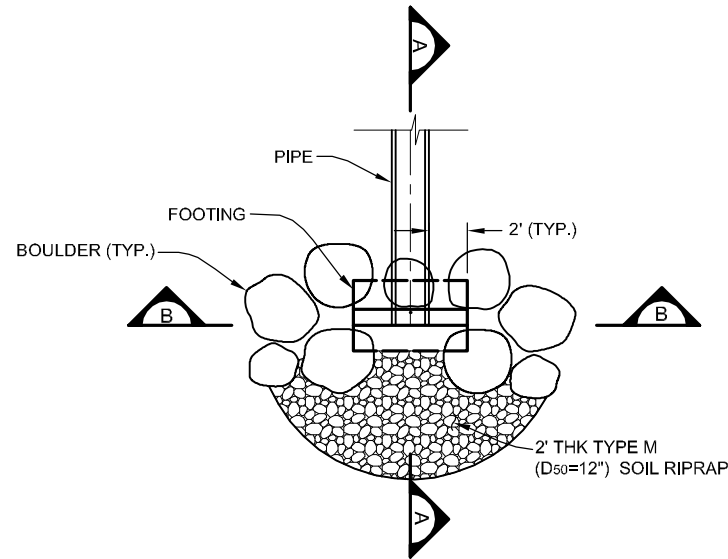
REFERENCE:	SCALE:	Standard Plan Revision	
		No.	Date



76 INVERNESS DRIVE EAST, SUITE A  
 ENGLEWOOD CO, 80112  
 PHONE (303) 858-8844  
 FAX (303) 267-9565

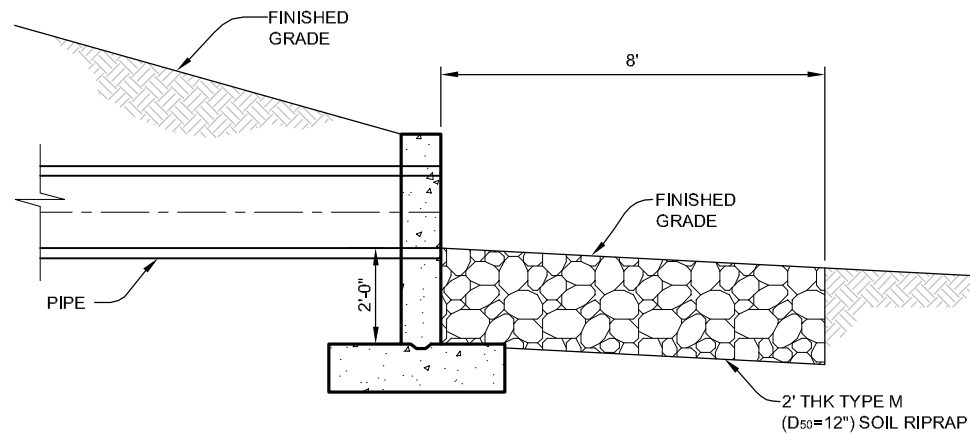
EXAMPLE PLAN 2  
**MODIFIED EXTENDED  
 DETENTION BASIN**

SHEET  
 2 OF 3



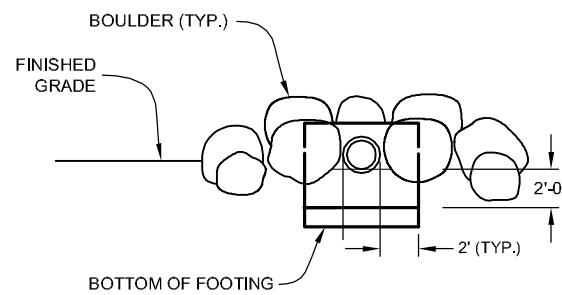
**PIPE OUTLET PLAN (TYP.)**

SCALE: 1" = 10'



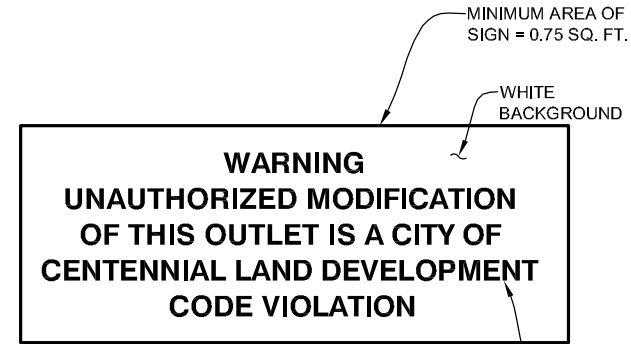
**SECTION A**

SCALE: 1" = 4'



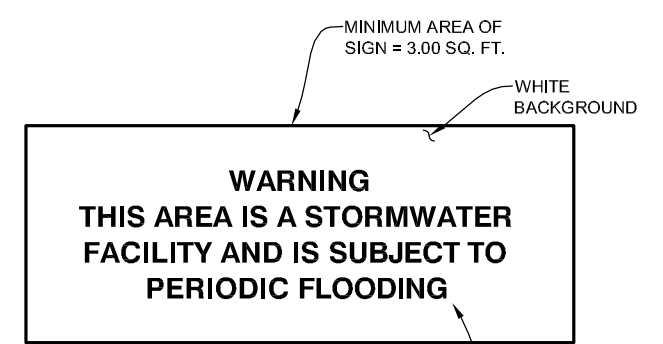
**SECTION B**

SCALE: 1" = 10'



**OUTLET MODIFICATION SIGN**

N.T.S.

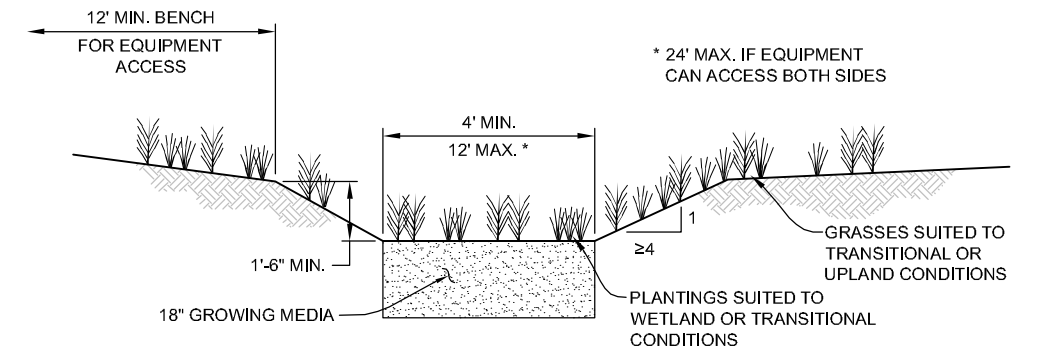


**FLOOD HAZARD WARNING SIGN**

N.T.S.

**SIGNAGE NOTES:**

1. OUTLET MODIFICATION SIGN SHALL BE ATTACHED TO OR POSITIONED NEARBY ALL EDB OUTLETS.
2. TWO (2) FLOOD HAZARD WARNING SIGNS SHALL BE PROVIDED AROUND THE PERIMETER OF THE POND.



**LOW FLOW CHANNEL/INITIAL SURCHARGE ZONE**

SCALE: 1" = 5'

NAME: P:\09\01\03\2009 Task Orders\_SEWSWATask 4 EDB\_Detail\CAD\09013-EDB-2\_Example2.dwg DATE: APR 20, 2011, TIME: 11:49 AM

REFERENCE:	SCALE:	Standard Plan Revision	
		No.	Date



76 INVERNESS DRIVE EAST, SUITE A  
 ENGLEWOOD CO, 80112  
 PHONE (303) 858-8844  
 FAX (303) 267-9565

EXAMPLE PLAN 2  
**MODIFIED EXTENDED  
 DETENTION BASIN**

SHEET  
 3 OF 3