

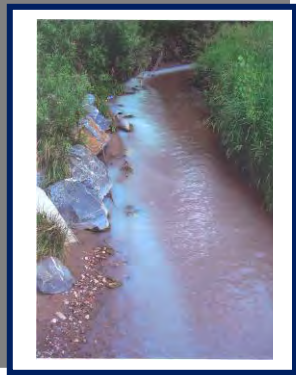
# Your Actions Prevent Stormwater Pollution!

## Homeowner Chores that can lead to Illicit Discharges and Illegal Dumping

### What?

An illicit discharge is any discharge to the storm sewer system that is not composed entirely of stormwater (rainwater or snow melt), except for discharges specifically allowed, such as landscape irrigation and foundation drains. Simple household chores CAN impact water quality!

### Why?



Stormwater runoff can easily become polluted by metals, chemicals, sediment, fertilizers, detergents and trash it picks up as it flows. Many everyday activities such as vehicle maintenance, landscape fertilizing, and car washing can contribute to stormwater pollution. Waste, residues, and byproducts from these activities enter storm drains, and flow into creeks and rivers harming aquatic life and impacting water quality.



### Questions?

*For more information about water quality protection, please contact the Southeast Metro Stormwater Authority at 303-858-8844.*

### How?

#### DO

- Always use a drain pan when removing vehicle fluids; use drain tables, or pump or suction system to capture the fluids.
- Keep your cars maintained so they don't leak. Check for leaks.
- Keep soaps and detergents out of storm drains. Wash car at a commercial car wash that recycles their water or sends it to a sanitary sewer for treatment. Or wash on grass or gravel if convenient and allowed by covenants.
- Eliminate soil erosion problems, like gullies and erosion rills, in your yard area as runoff from these causes sediment buildup in our creeks.
- Dispose of paints and other chemicals properly. Call SEMSWA at 303-858-8844 about household hazardous waste disposal options.
- When spills and leaks happen, clean up as much of the fluid as you can, as quickly as possible using dry methods. NEVER hose down!
- Use up landscape material delivered to your driveway or front curb within 24 hours of delivery and put a rubber hose around the bottom of the pile to keep sediment and other materials in place. Cover if rain is imminent.

#### DON'T

- DO NOT** ignore any leak or drips from equipment; repair as soon as possible and use a drip pan during temporary storage of your vehicle.
- DO NOT** store landscaping materials in the Right of Way or on impervious surfaces for longer than 24 hours.
- DO NOT** wash equipment or cars on the street or driveway. If possible, wash cars and equipment on grassy areas or take to car wash.
- DO NOT** repair equipment outside; use a covered, designated area for such repairs.
- DO NOT** blow or sweep grass clippings, leaves, or other landscape materials into the gutter. Sweep materials into landscaping or dispose of in trash.
- DO NOT** wash down any streets, curbs, sidewalks, or driveways with water. Use dry methods for cleanup whenever possible.

